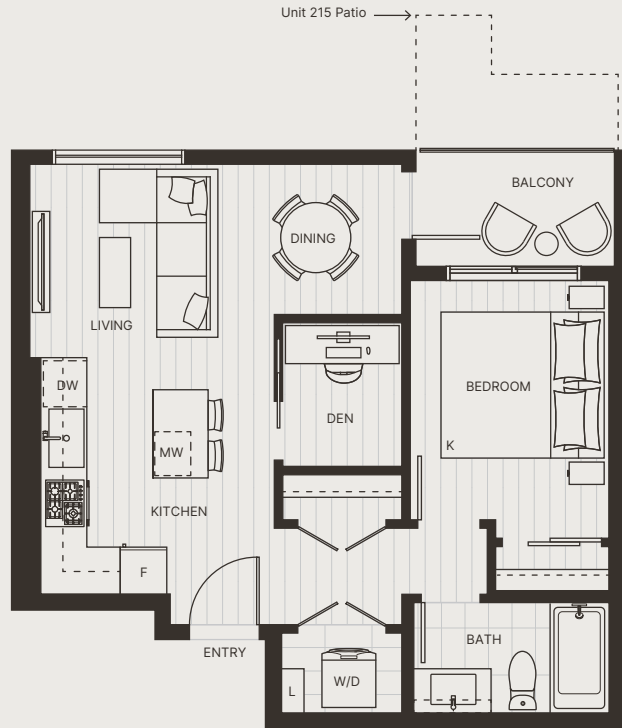


WILFORD

WEST COQUITLAM



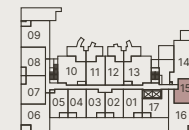
PLAN A1

ONE BEDROOM + DEN

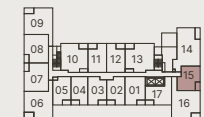
INTERIOR
591 SF

EXTERIOR
48 - 138 SF

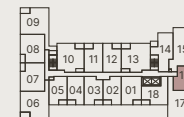
TOTAL
639 - 729 SF



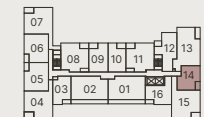
LEVEL 2



LEVEL 3



LEVEL 4-5



LEVEL 6



WILFORD

WEST COQUITLAM



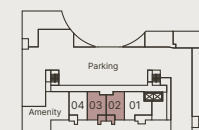
PLAN A2

ONE BEDROOM + DEN

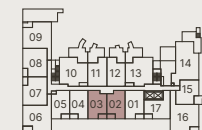
INTERIOR
537 SF

EXTERIOR
49 - 71 SF

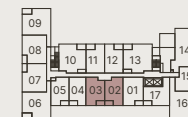
TOTAL
586 - 608 SF



LEVEL 1



LEVEL 2



LEVEL 3

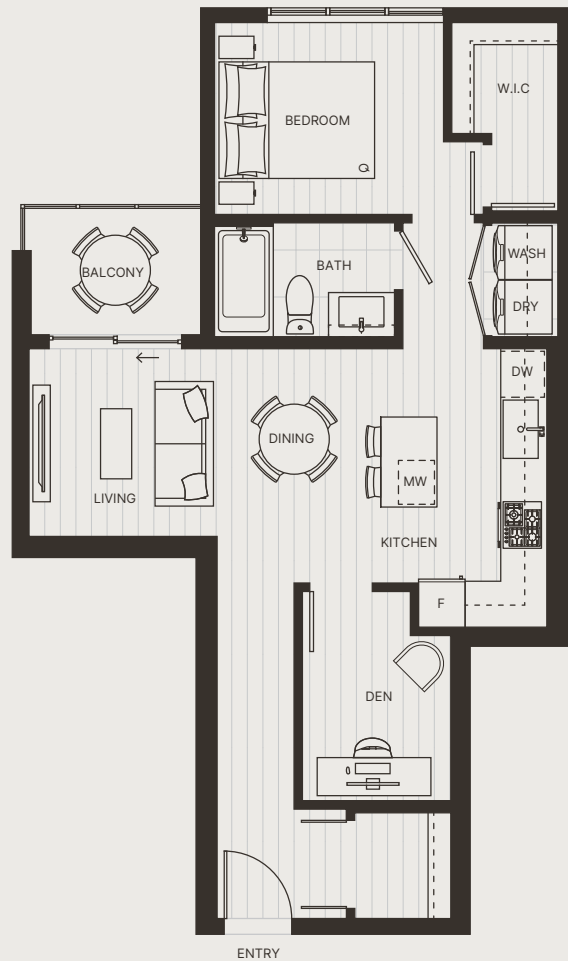


LEVEL 4-5



WILFORD

WEST COQUITLAM



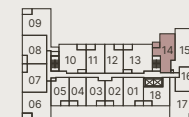
PLAN A3

ONE BEDROOM + DEN

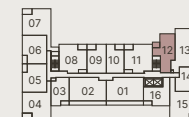
INTERIOR
686 SF

EXTERIOR
48 SF

TOTAL
734 SF



LEVEL 4-5

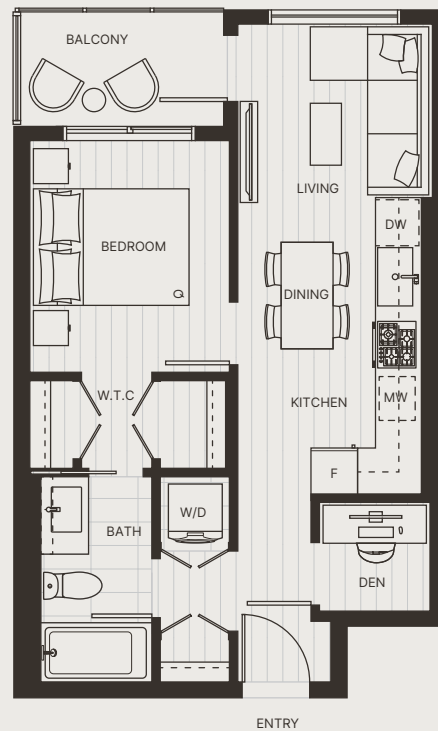
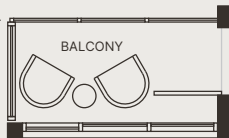


LEVEL 6

WILFORD

WEST COQUITLAM

Unit 603 Patio and Window Variation



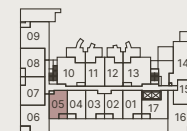
PLAN A4

ONE BEDROOM + DEN

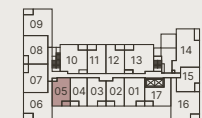
INTERIOR
520 SF

EXTERIOR
41 - 49 SF

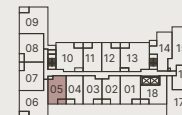
TOTAL
561 - 569 SF



LEVEL 2



LEVEL 3



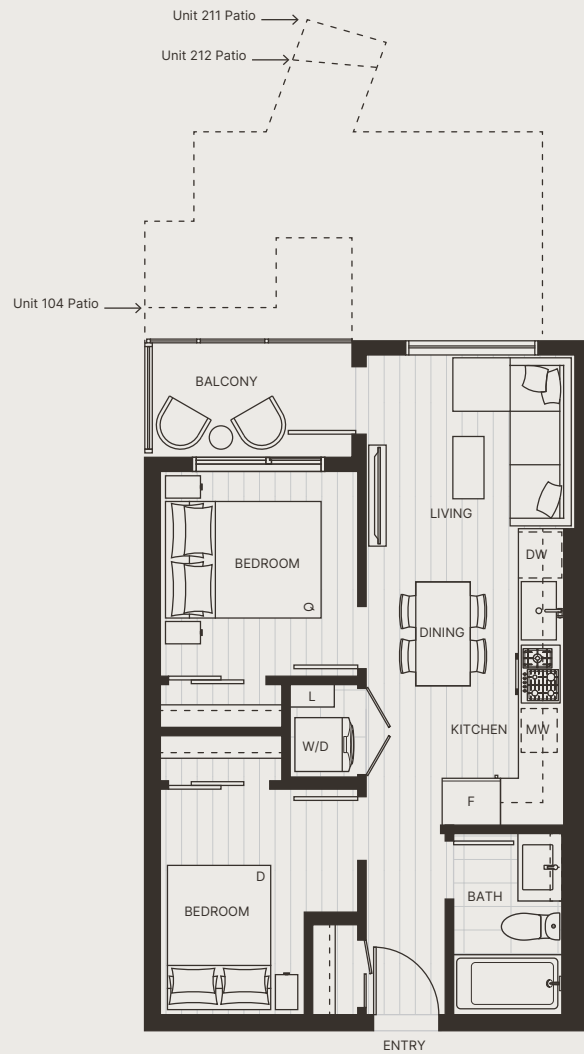
LEVEL 4-5



LEVEL 6

WILFORD

WEST COQUITLAM



PLAN B1

JR TWO BEDROOM

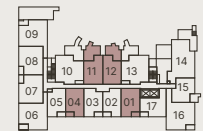
INTERIOR
552 - 562 SF

EXTERIOR
49 - 195 SF

TOTAL
601 - 753 SF



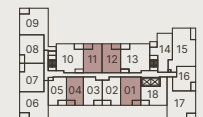
LEVEL 1



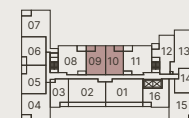
LEVEL 2



LEVEL 3



LEVEL 4-5



LEVEL 6



WILFORD

WEST COQUITLAM



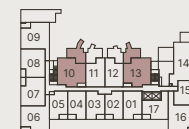
PLAN C1

TWO BEDROOM + DEN

INTERIOR
834 - 835 SF

EXTERIOR
49 - 204 SF

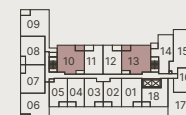
TOTAL
883 - 1,038 SF



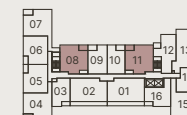
LEVEL 2



LEVEL 3



LEVEL 4-5



LEVEL 6

WILFORD

WEST COQUITLAM



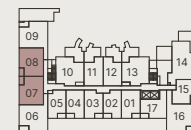
PLAN C3

TWO BEDROOM

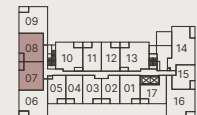
INTERIOR
730 - 731 SF

EXTERIOR
49 SF

TOTAL
779 - 780 SF



LEVEL 2



LEVEL 3



LEVEL 4-5



LEVEL 6



WILFORD

WEST COQUITLAM



PLAN C4

TWO BEDROOM + DEN

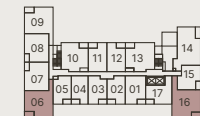
INTERIOR
861 - 875 SF

EXTERIOR
49 SF

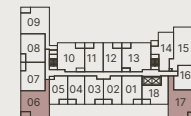
TOTAL
910 - 924 SF



LEVEL 2



LEVEL 3



LEVEL 4-5

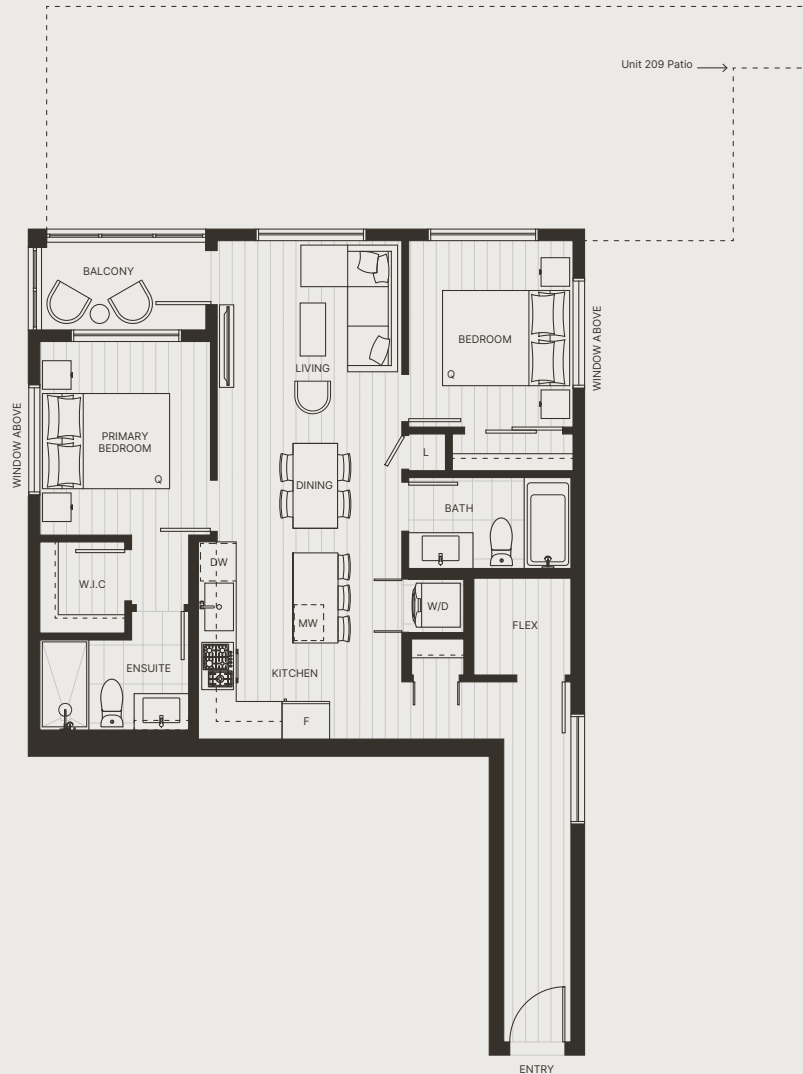


LEVEL 6



WILFORD

WEST COQUITLAM



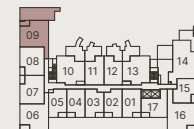
PLAN C4A

TWO BEDROOM + DEN

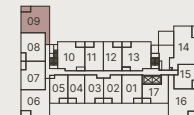
INTERIOR
859 - 878 SF

EXTERIOR
55 - 408 SF

TOTAL
933 - 1,267 SF



LEVEL 2



LEVEL 3



WILFORD

WEST COQUITLAM



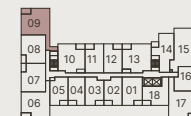
PLAN C4B

TWO BEDROOM + FLEX

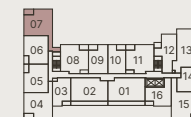
INTERIOR
921 SF

EXTERIOR
55 SF

TOTAL
976 SF



LEVEL 4-5



LEVEL 6



WILFORD

WEST COQUITLAM



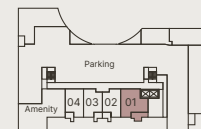
PLAN C5

TWO BEDROOM

INTERIOR
719 SF

EXTERIOR
146 SF

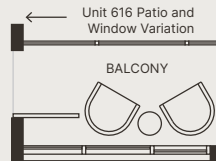
TOTAL
865 SF



LEVEL 1

WILFORD

WEST COQUITLAM



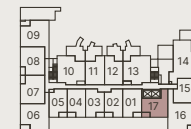
PLAN C6

TWO BEDROOM

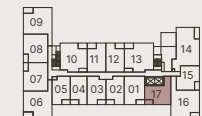
INTERIOR
660 SF

EXTERIOR
41 - 49 SF

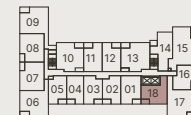
TOTAL
701 - 709 SF



LEVEL 2



LEVEL 3



LEVEL 4-5



LEVEL 6



WILFORD

WEST COQUITLAM



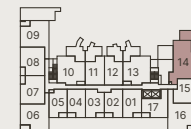
PLAN D1

THREE BEDROOM + DEN

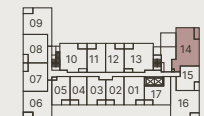
INTERIOR
1,020 SF

EXTERIOR
62 - 202 SF

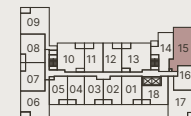
TOTAL
1,082 - 1,222 SF



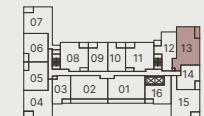
LEVEL 2



LEVEL 3



LEVEL 4-5



LEVEL 6



WILFORD

WEST COQUITLAM



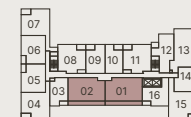
PLAN D2

THREE BEDROOM + DEN

INTERIOR
982 - 991 SF

EXTERIOR
177 SF

TOTAL
1,159 - 1,168 SF



LEVEL 6

WILFORD

WEST COQUITLAM

PLAN PH1&2

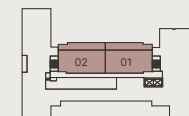
THREE BEDROOM + DEN

INTERIOR
1,260 SF

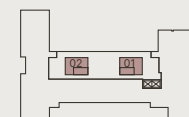
EXTERIOR
329 SF

ROOFTOP
318 SF

TOTAL
1,907 SF



LEVEL 7



ROOF DECK



MAIN LEVEL



ROOF DECK

